



CORNING

When Mobile Meets Enterprise

80%

**OF CELLULAR USAGE
TAKES PLACE INDOORS**

Consider all your indoor connectivity options

When planning your enterprise network, Wi-Fi may seem like the obvious choice to meet your mobile needs. However, with mobile ownership in the enterprise at 100%, in-building cellular may be the smarter solution. Cellular offers easy, seamless communication without the additional upfront and long-term cost, complexity, risk, and responsibility associated with Wi-Fi and VoIP.

Learn more
about our enterprise
cellular solutions
and support at
corning.com/justright



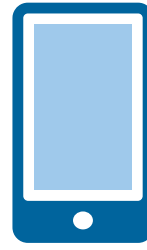
Reliable connections

Wi-Fi

- Reliability depends on Wi-Fi design and configuration
- Ability to handover live calls between indoor Wi-Fi and outdoor cellular networks may require special software and support

99%

OF MOBILE LTE CALLS STAY CONNECTED INDOORS OR WHEN LEAVING OR ENTERING A BUILDING



MOBILE INTERNET USE SURPASSED LAPTOP AND PC IN

2016*

Effortless functionality

Cellular

- Internet access isn't inhibited by an enterprise firewall
- App stores, streaming, and other services are always available

Wi-Fi

- Firewalls may block apps and services
- Limits customer flexibility and productivity in today's always-on world



Extended battery life

Cellular

- Connecting to in-building cellular vs. distant towers significantly increases battery life

Wi-Fi

- Maintaining connection to both distant tower and Wi-Fi reduces battery life
- Radio transmitters are a major power drain on mobile devices



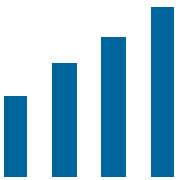
Native voice call support

Cellular

- LTE networks are designed for security and mobility

Wi-Fi

- VoWi-Fi set up may require protocols prohibited by information security
- More infrastructure required to support VoWi-Fi compared to data-only Wi-Fi networks



No configuration required

Cellular

- Mobile devices automatically work with LTE signal
- No set up by IT or device owner necessary

Wi-Fi

- IT support and potential infrastructure software licensing costs
- Upfront IT installations on devices based on security requirements
- Continued service desk and end-user computing support for issues



Minimal IT responsibility

Cellular

- Limited to reporting issues with indoor signal
- Almost no customer support necessary

Wi-Fi

- IT assumes responsibility for entire "last mile" indoor network
- Need to develop processes, tools, and training for service desk and end-user computing
- Network and firewall monitoring
- Mobile devices can double number of network devices
- Additional licenses may be required for network infrastructure



Tighter security

Cellular

- Limiting access to VPN termination points reduces risk of undetected breaches

Wi-Fi

- Connecting malware-infected semi-managed mobile devices to enterprise Wi-Fi can open the door to undetected network incursions via LTE

56%

OF NETWORK BREACHES GO UNDETECTED FOR MONTHS OR LONGER †



Designed for mobility

Cellular

- LTE proven effective and reliable by billions of customers every day

Wi-Fi

- Network must be designed and configured to support mobility